

## 减速电机系列 Modular Gearmotor Series



DLR系列斜齿轮减速电机  
DLR Series Helical Gearmotors



DLK系列斜齿轮-锥齿轮减速电机  
DLK Series Helical-Bevel Gearmotors



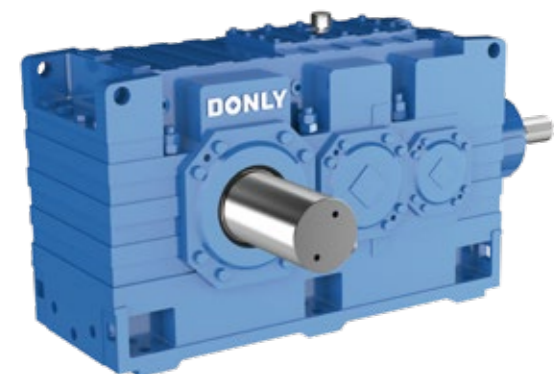
DLF系列平行轴斜齿轮减速电机  
DLF Series Parallel-Shaft Helical Gearmotors



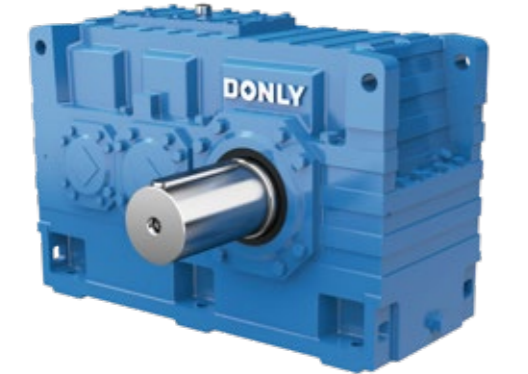
DLS系列斜齿轮-蜗轮蜗杆减速电机  
DLS Series Helical-Worm Gearmotors

功率范围 Power range	扭矩范围 Rated torque	传动级数 Transmission stage	速比范围 Ratio range
0.12-200kW	up to 50kN.m	1-6	1.4-35000

## 模块化高精减速机系列 Modular Gearbox Series



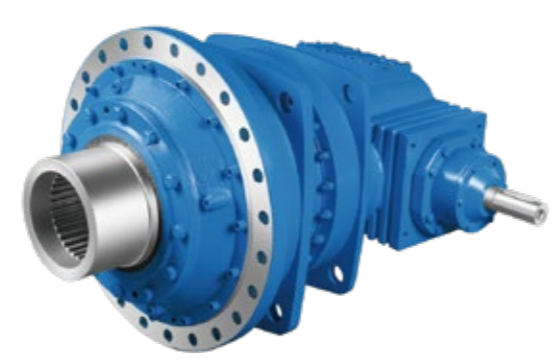
DLB系列直交轴减速机  
DLB Series Bevel-Helical Gear Units



DLH系列平行轴减速机  
DLH Series Helical Gear Units

功率范围 Power range	扭矩范围 Rated torque	传动级数 Transmission stage	速比范围 Ratio range
1.7-10000kW	up to 900kN.m	1-4	1.25-450

## 模块化行星减速机系列 Modular Planetary Gearbox Series



DLP系列行星减速机  
DLP Series Planetary Gear Units



功率范围 Power range	扭矩范围 Rated torque	传动级数 Transmission stage	速比范围 Ratio range
0.4-10779KW	up to 2600kN.m	2-5	25-4000

## 电机系列 Motor Series



DPM系列高效永磁同步(伺服)电动机  
DPM Series High-Efficiency Permanent Magnet Synchronous(Servo) Motors



DM系列三相异步电机  
DM Series Three Phase Asynchronous Motors

功率范围 Power range	0.75-250kW
工作制 Duty cycle	S1
绝缘等级 Insulation level	F级
冷却方式 Cooling method	IC416

功率范围 Power range	0.25-500KW
额定电压 Rated voltage	380V
绝缘等级 Insulation level	F
冷却方式 Cooling method	IC411

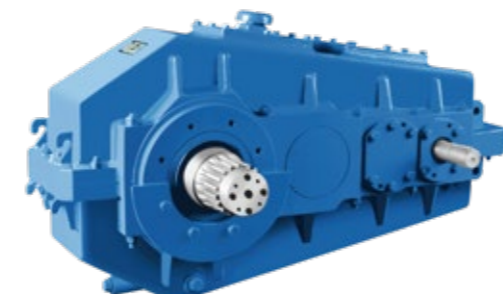


回转电机  
Tower Crane Rotary Motor

速比范围 Ratio range	40-250
扭矩范围 Torque range	9-110kN.m

应用领域:堆取料机、挖掘机、门座起重机、装船机、转炉回转机构等  
Application Fields:Stacking and reclaiming machines, excavators, gantry cranes, ship loaders,converter rotating mechanisms, etc.

## 起重专用减速机系列 Lifting Specialized Gearbox Series



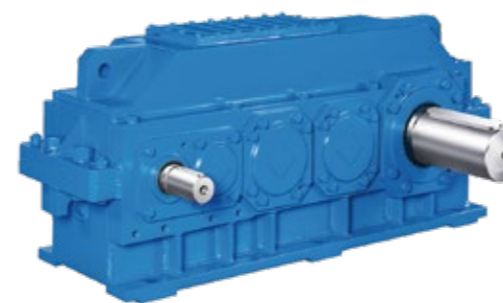
DLQY..S系列起重机专用减速机  
DLQY..S Series Gear Units For Crane

功率范围 Power range	1-3500kW
传动级数 Transmission stage	3-4级
速比范围 Ratio range	16-400



DLQY..D系列起重机专用减速机  
DLQY..D Series Gear Units For Crane

功率范围 Power range	1-3500kW
传动级数 Transmission stage	3-4级
速比范围 Ratio range	16-400



DLHK系列起重机专用减速机  
DLHK Series Gear Units For Crane

功率范围 Power range	up to 947kW
传动级数 Transmission stage	3-4级
最大输出扭矩 Maximum Output Torque	up to 109kN.m



DG系列电动葫芦专用减速电机  
DG Series Hoist Gearmotors

起升重量 Lifting weight	2 tons to 20 tons
电机功率 Motor power	two-speed 0.45/3.2kW to 2.6/16kW
起升速度 Lifting speed	3m/min-9m/min
输出轴 Output shaft	DIN5480花键轴 splined shaft



塔机起升机构  
Tower Crane Lifting Mechanism

额定起重量 Rated lifting capacity	6-10 tons
最大绳速 Maximum rope speed	200m/min
应用领域:塔机、起重机、行车等起升机构 Application Fields:Hoisting mechanisms for tower cranes, lifting cranes, and overhead cranes.	



DLHZ系列回转行星减速机  
DLHZ Series Planetary Gear Units For Slewing Drive

速比范围 Ratio range	140-275
扭矩范围 Torque range	9-25kN.m
应用领域:塔机、起重机回转机构等 Application Fields:Tower crane and crane slewing mechanism	



DLGW系列卷扬行星减速机  
DLGW Series Planetary Gear Units For Winch Drive

速比范围 Ratio range	40-250
扭矩范围 Torque range	9-110kN.m
应用领域:旋挖钻机、港口吊机、海洋石油钻井平台吊装卷扬机构等 Application Fields:Rotary drilling rigs, port cranes, offshore oil drilling platform lifting and winching mechanisms, etc.	

## 公司简介 Company Profile

宁波东力传动设备有限公司创办于1993年, 主营减速机、电机、齿轮箱、联轴器传动设备研发制造与传动控制系统解决方案的提供, 是中国齿轮行业首家A股上市企业——宁波东力股份有限公司旗下全资子公司。经过30多年的发展, 已成为全国传动设备行业龙头企业, 现有江北、杭州湾、湖南常德三个制造基地, 有员工1500余人。

Ningbo Donly Transmission Equipment Co., Ltd. founded in 1993, specializes in the research, development and manufacturing of transmission equipment, including reducers, motors, gearboxes and couplings. It is a wholly-owned subsidiary of Ningbo Donly Group Co., Ltd. and proudly holds the distinction of being the first A-share listed company in China's gear industry. With over 30 years of development, Donly has become as a leading enterprise in the national transmission equipment sector. The company operates manufacturing bases in Ningbo, Hangzhou Bay and Hunan, with a workforce over 1,500 employees.

## 先进设备 Advanced Equipment



C100U全数控克林贝格弧齿机 P1200/P2000/P4000格里森及尼尔斯成型磨齿机群 PAMA镗铣加工中心  
C100U CNC Klingberg Spiral Bevel Gear Machine P1200/P2000/P4000 Gleason and NILES Grinding Machine PAMA Boring And Milling Machine Center

## 制造基地 Manufacturing Base



宁波基地 Ningbo Base 杭州湾基地 Hangzhou Bay Base 湖南基地 Hunan Province Base

# DONLY

驱动无限可能

### 宁波东力传动设备有限公司 NINGBO DONLY TRANSMISSION EQUIPMENT CO.,LTD.

地址: 宁波市江北区银海路1号 Address: No. 1, Yin Hai Road, Jiangbei District, Ningbo City  
国内业务热线: 400-168-6666 Domestic Business Hotline: 400-168-6666  
国际业务热线: 0086-574-88398809 International Business Hotline: 0086-574-88398809  
国际业务邮箱: frank@donly.com Export Department Email: frank@donly.com  
网址: www.donly.com Website: www.donly.com



网址 Website



微信公众号 WeChat

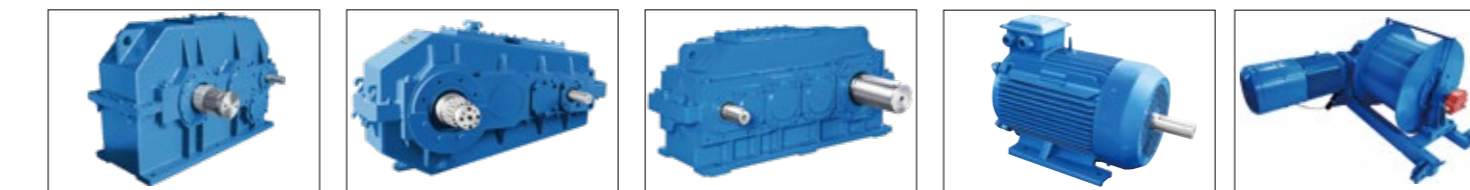


抖音号 Tiktok



Whatsapp

## DONLY TRANSMISSION



## 起重行业传动解决方案

Transmission Solutions For The Lifting Industry

# DONLY

驱动无限可能



## 起重行业应用场景

### Application Scenarios Of Hoisting Industry

东力产品广泛应用于建筑工地、港口、冶金、物流仓储、工业生产等起重领域, 是连接生产各个环节的桥梁。东力产品依靠高效、可靠、稳定的特点, 确保起重机在起升、变幅、行走、回转等各关键部位安全地运行。

主要产品有: DLR/F/K/S减速机、DLH/B/P工业齿轮箱、DLQY/DLHK起重专用齿轮箱、DG电动葫芦减速机、DLW专用齿轮箱、起升机构等

Donly's products are extensively utilized in the lifting sector, spanning applications in construction sites, ports, metallurgy, logistics warehouses, and industrial production. Serving as a vital link connecting various production stages, Donly's products leverage efficiency, reliability, and stability to ensure the safe operation of cranes in crucial aspects like lifting, slewing, traveling, and rotation.

Key products include DLR/F/K/S geared motors, DLH/B/P industrial gearboxes, DLQY/DLHK specialized gearboxes for lifting, DG electric hoist geared motors, DLW specialized gearboxes, and lifting mechanisms.

